

MONDAY JULY 8TH | ISSUE 25

NONSUCH NEWS

Our weekly newsletter for the school community



WHAT'S INSIDE THIS ISSUE:

- Messages from Ms Cavilla
- Updates from Ms Osborne
- Safeguarding and wellbeing
- Community notices
- School and department news
- Upcoming dates for your diary

MESSAGES FROM MS CAVILLA



Dear parents, carers and students,

Parent questionnaire response - July 2024

Thank you for filling in the parent questionnaire that came out a few weeks ago. 625 of you completed all of the questionnaire, which is enough for us to get a real sense of your feelings towards the school. We used the same questions as can be found on Ofsted's Parent View with some additional ones regarding how we support transition into Y7 and through GCSE options and transition into the sixth form. I thought it would be useful for me to comment on some of the questions.

- 73% agreed that "my child is happy at this school" with 19% responding "I don't know." If your child is unhappy, please let us know and we can try and work together to help address this. Our student voice has shown an improvement in the proportion of students who agree that the school encourages them to look after their emotional and mental health. Our wellbeing strategy has three strands: participation, education and responsive care. We work hard to create a sense of community, identity and belonging and regularly seek student feedback on our provision and approach. The school adopts a values-based approach and our school values underpin our decisions and considerations.
- 92% agreed that "my child feels safe at this school." I hope that if you are one of the 2.5% of respondents who disagreed, you have spoken with us at school, particularly the form tutor who knows your child the best.
- 87% agreed "the school has high expectations of students' behaviour." (continued overleaf)
- 73% agreed that "the school makes me aware of what my child will learn during the year." In order to address this to gain higher satisfaction rates, we have updated our curriculum information on the [school's website](#). We have fully updated all the Y7 curriculum information and are in the process of updating the curriculum information for Years 8 and 9. You will also find information in the [Parent Portal](#). (continued overleaf)



- 62% of respondents agreed that “when I have raised concerns with the school they have been dealt with properly.” This question had fewer respondents than most and of those, 63 responses were “neutral/I don’t know.” Our school policies are to be found [here](#). We strive to be transparent and review our policies and procedures each year based on feedback we receive. At Parent Information Evenings we go through the main policies including the home-school agreement. We will hold parent focus groups to further explore this matter to ensure that our home-school communication grows stronger.
- 82% of respondents who replied to the question “my child has SEND and the school gives them the support that they need to succeed,” agreed. 18% did not agree. Our SENDCo is Mrs. Bond, who works with our dedicated SEND team. We also have an Assistant SENDCo, a Learning Support Assistant and a newly appointed Neurodiversity Mentor. We work hard to ensure our curriculum is inclusive for all students. More details about the work we do and who to contact if you have concerns can be found [here](#).
- 87% agreed that “my child can participate in societies, clubs and extra-curricular activities in the school.” Under 1% disagreed with 12% of respondents selecting “don’t know/neutral.” Offering a holistic experience for students is one of our school’s key aims. In our Activities Week we strive to provide a wide range of experiences and activities at no cost to ensure 100% engagement.
- 76% agreed that “the school has high expectations for my child in terms of personal development and high academic achievement.” 18% of responses returned “don’t know/neutral.”
- 86% of respondents agreed that “the school lets me know how my child is doing,”. We have followed up on parent feedback to ensure that tutor consultations or guidance meetings are focused and strategically placed. We are reviewing our rewards system to ensure greater reward to students in KS4 and above. The ClassCharts app now allows parents to see the status of their daughter’s attendance, house credits or debits on a daily basis.
- 77% agreed that “my child is doing well at this school.” 18% of responses declared “don’t know/neutral.” We are very proud of the results our students achieve. At GCSE we have a ‘progress 8’ measure of 1.1 which means that most of our students achieve a whole grade higher in their GCSEs than their Key Stage 2 tests have predicted. Last year half of all Maths and English GCSE grades were a grade 9. Our in-year data shows that 87% of students are achieving expected or higher progress in Y7, in Y8 the figure is 88% and in Y9, it is 89%. This pattern shows our students make better progress year on year as they move through the school. At A Level we are predicting 80% A*/B with 53% of those grades at A and above including over 20% A* grades.

Thank you to all who responded to the questionnaire. We will run this annually for all year groups, so we can report on the progress we are making against the above areas. By responding to your feedback and addressing areas the survey highlights, we can continue to improve.

Ms Cavilla

UPDATES FROM MS OSBORNE

Attendance

Thank you for your continued support with your child’s attendance. We continue to be proud of our school’s attendance figures and that Nonsuch is a place where students want to attend and learn.

A reminder that in February, the Government published new guidance for attendance which will become statutory from August 19th 2024. This is part of the Government’s drive to improve attendance at school. This will mean that we will be making some small changes to our school policy which we will share with you in September which reflects changes to the law and the new National Framework for using penalty notices. The full guidance is [here](#).

A reminder that the Government has an [attendance hub](#) which can help parents make informed decisions about attendance.

The Government provides parents with guidance around illness and attendance at school. This [guidance](#) helps parents make informed decisions about their child's health and attendance.

You can monitor your child’s attendance data through the School Gateway app and ensure that it remains at 95% and above. If there is anything that we may be concerned about, your child’s form tutor, Head of Year or I will contact you.

	Attendance	Authorised	Unauthorised	Persistent absence >=10%
Y7	98.09	1.49	0.34	1
Y8	97.58	1.91	0.48	1
Y9	96.70	2.77	0.53	7
Y10	96.22	3.02	0.66	12
Y11	79.68	19.11	1.21	209
Y12	95.59	3.25	1.09	14
All	94.03	5.21	0.71	244

All figures in % session attendance summary (4/9/23-4/7/24)



SAFEGUARDING AND WELLBEING

Support from Sutton Council about the cost of living

Support is available in Sutton - from money matters to mental health and wellbeing, Sutton Council, local charities, community groups and partners are working together to support residents and those they care about with the rising cost of living.

To find out what support is available or to find out how you can help others, visit the [Sutton Council website](https://www.suttoncouncil.gov.uk), call 020 8770 5000, visit your library or the Civic Offices.

Parent Session
County Lines in London

- Sutton/Croydon/Bromley
- Southwark/Lambeth
- Greenwich/Bexley

Register today
www.ivanstrust.org.uk/webinars

6:30-7:30pm
9th July

Hosted by
Iverson Trust,
a parent with lived experience & a local police officer.

i feel so much more confident to talk to my child

If you have any safeguarding concerns please contact Mrs Hart on safeguarding@nonsuchschool.org

COMMUNITY NEWS

WE NEED YOUR HELP!

The Diamond Centre

**VOLUNTEERS NEEDED
AGE 13 YEARS AND UP**

TAKE A LOOK AT THE WEBSITE OR
EMAIL US FOR INFO

www.diamondcentre.org.uk
admin@diamondcentre.org.uk

HELP US WITH:

- ASSISTING IN LESSONS WITH OUR DISABLED PARTICIPANTS
- STABLE DUTIES
- GARDENING
- TEA & COFFEE MAKING



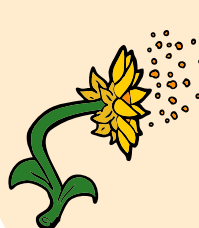
Please note that activities or volunteering opportunities shared in this newsletter are not endorsed by the school.

Reporting absence

Please report absences via Schoolgateway. Download the app here: [Nonsuch High School for Girls - Reporting Absences](#).

We would love to hear from you about the extracurricular activities/achievements students have enjoyed outside of school. Please complete [this link](#) so we can share achievements in this newsletter.

Advice from First Aid



Pollen forecasts are high. If your child has hayfever, please make sure that they take their medication before coming to school. Many thanks.

Y12 Geography Field Trip

In June, the Geography Department took Y12 geographers to the Lake District to complete their four-day A-Level Geography fieldwork. The students seemed to thoroughly enjoy their time at the Castle Head Field Study Centre. They applied different data collection techniques in the field, collected data on microclimates and assessed how this impacted infiltration rates.

We spent time in Morecambe Bay exploring how the coastline is managed and measuring beach profiles at Hest Bank. Barrow-in-Furness is the students' 'distant place' case study in the topic Changing Places, where they carried out qualitative and quantitative data collection methods to look at the impact of economic change in the town. Finally, the group participated in a team building challenge and it was a real pleasure to witness them come together and support each other mentally and physically! The students were excellent representatives of our school and they have built a strong foundation for their NEAs. A special thank you to Miss Ross for joining us.



Fundraising for Friends of Kipkelion

Miss Denyer, Mr Coy and Miss Humphreys are running the London Big Half on September 1st in support of Friends of Kipkelion, one of charities we are currently supporting as a school.



The money raised will be spent on running educational courses for young people in Kipkelion in Kenya. The courses are designed to help young people, in particular those with disabilities, start their own business. Many young people in Kipkelion can't find a job when they leave school, and those with disabilities are not able to take part in the heavy farm work which dominates the local economy. The courses show people how they can earn money through activities such as bee keeping, breeding chickens, mending shoes and they are taught how to make a simple business plan and budget. They are then provided with the basic items they need to get going – e.g. a bee hive or some tools. These educational courses are really popular and each course costs £475 and 15 young people can take part. Thank you so much in advance for all your support - if you would like to donate, please use [this link](#).

UKMT Junior Kangaroo Maths Challenge

We are very pleased to have achieved the following results in the UKMT Junior Kangaroo round. In Y7, there were six Merits and 13 Qualifications, while in Y8, students achieved 17 Merits and 31 Qualifications.

Students are either awarded a certificate of Merit or a certificate of qualification.

The top 25% of UK students who are invited to take part in the Kangaroo receive Certificate of Merits.

Congratulations to Ananya in Y7 who achieved the Certificate of Merit Best in School with a score of 130 and Eloise in Y8 achieved Certificate of Merit Best in year with a score of 129. Well done to all students who participated.



ARKWRIGHT
ENGINEERING SCHOLARSHIPS



Bianca, Yathra and Devika
have been awarded an Arkwright Scholarship

What is an Arkwright Engineering Scholarship?

An Arkwright Engineering Scholarship is the most prestigious scholarship of its type in the UK to inspire and nurture school-age students to be the country's future **leaders** of the Engineering Profession.

Every Scholarship is sponsored by a commercial company, trade association, university, professional institution, armed service, government organisation, worshipful charity, charitable trust or personal donor. This means that support is offered in various different ways, for example: developing your own engineering projects, attending university open days, courses, textbooks, valuable hands-on work experience, support for curriculum project and a personal mentor who can help with aspects of your studies and career planning.

Do you want to be an Arkwright Scholar?

Applications open in October for Year 11 students interested in a career in engineering.

If you are interested in applying please email Miss Hobart for more details.

<https://www.arkwright.org.uk/>

Benefits for Scholars

- Nationally-recognised Scholarship
- Financial support for the Scholar and their school
- Personal development
- Support from your Sponsor
- Dedicated Engineering Mentor
- Industry-based Connect Days
- University-based VIP Receptions
- Early notification of national competitions
- Network with like-minded students



CCF Main Camp

Lara and Caitlin (Y12) write: "Whilst the rest of the school was on Activities Week, cadets from Y9-13 travelled to Northumberland to take part in the annual Main Camp. We met at Sutton Grammar to begin the long journey to Otterburn Training Camp, near Newcastle. Following a briefing from Wing Commander Hobbs and the issuing of camp t-shirts, we all got an early night in preparation for the long week ahead.

The first two days were spent in our platoons, undergoing training in fieldcraft and bushcraft. The aim of these sessions was to prepare cadets for the following days, in which we undertook a 36hr exercise. Despite inclement weather, the exercise was a huge success. Our bashas remained standing and everyone got at least some sleep that night. Even so, we were pleased to return to base, have a hot shower, and spend the remaining afternoon in the sun, cleaning rifles.

The schedule then relaxed slightly. Half the contingent headed out into Northumberland to participate in a coasteering activity, whilst the other half spent the day on the live range. Both activities were enjoyable, with many cadets achieving extremely small groupings on the 25m range. The next day we swapped activities.

We ended the camp on a more solemn note, saying goodbye to the 104ths, who are now heading off to university. After they handed down their kit, we all had a chance to say goodbye and thank them for an excellent year. The 105ths have a lot to live up to!"



Ballgirling cinch Tennis Championships 2024

Months of rolling, feeding, stressing and losing our Friday evenings culminated two weeks ago at the 2024 cinch Championship Tennis tournament. Our final squad of ball kids arrived in school at 7:30am on Saturday June 15th, half asleep but excited to see all of our hard work throughout the year in action. After a 40-minute coach ride to Fulham, which we managed to wake everyone up with our upbeat playlists, we arrived at the prestigious Queen's Club. Following a briefing about the upcoming matches, we were thrown into the qualifiers and despite some of us never having stepped onto a grass court before, we quickly settled in and began to love every moment of the exhilarating tennis.

On Sunday, we got a glimpse of the imminent crowds during a newly introduced fan day and some exhibition matches on centre court with guest appearances from Judy Murray and Bear Grylls! We also got a special visit from Jamie Murray himself who wanted to come and meet the ball crew which was very exciting indeed. However, when Monday morning arrived and centre court officially opened, there was no room for error as matches were now being televised. That being said, we all rose to the occasion and our nerves gradually turned to confidence.

Some of the stars this year included Jack Draper, Cameron Norrie, Taylor Fritz, Alfie Hewitt, Tommy Paul, Lorenzo Musetti, Frances Tiafoe and of course, the number 1 seed, Queens and Wimbledon Champion of 2023, Carlos Alcaraz! Throughout the week, we faced many challenges and shock defeats including Alcaraz's heart-breaking loss in the second round. We also saw some new introductions such as the 'Learning Disability Tournament' with world class players from the UK and Australia.

Although we faced many challenges throughout the week such as rain delays, microphones that didn't work and of course dodging 150mph serves, we all adapted well, made new friends and had a lot of fun. The week concluded with a close final in which Tommy Paul (pictured below) managed to win a nail-biting second set tiebreak to gain his first grass court title and he even gave a special thanks to the ball crew in his post-match interview!

Overall, it was a great week with skilled tennis on all courts whether it was singles, doubles, wheelchair or learning disability. We'd like to thank Miss Burgess who worked hard to learn everything from scratch this year and Miss Snowden with her experience as a former ball girl as none of it would have been possible without them. And that brings the 2024 cinch Championships to a close!

See pictures of the ball girls in action on this [Sway link](#) - a huge well done to them all!



UPCOMING DATES FOR YOUR DIARY

Week 1	
Monday 8th July	Silver D of E Practice Expedition Year 10 Geography Fieldwork Trip
Tuesday 9th July	Year 10 Geography Fieldwork Trip
Wednesday 10th July	Year 10 Guidance Meeting Gold D of E briefing – 15.30
Thursday 11th	School ends at 12.25 Open Day – 14.15-20.00
Friday 12th	Late start for students – 9.55
Week 2	
Monday 15th July	
Tuesday 16th July	Sports Award Evening – 16.00-18.00
Wednesday 17th July	
Thursday 18th July	
Friday 19th July	Last day of school – end times tbc
Dates to note	
25th – 31st July	Gold D of E Practice & Qualifying Expedition
15th August	A-level Results day
22nd August	GCSE Results day and course changes