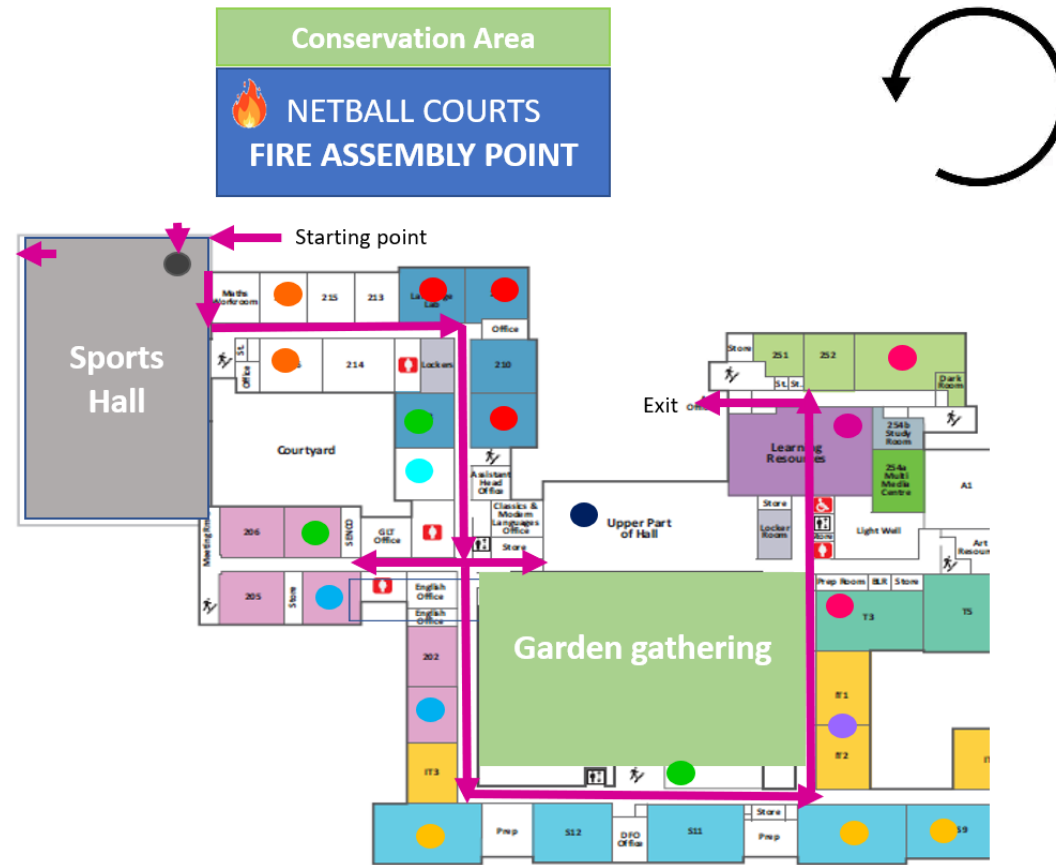


ROUTE GUIDANCE		Continue to...	
1	STARTING POINT PE (SPORTS HALL) After, exit and enter the main school building. Turn right and up the stairs	9	Chemistry
2	Maths (rooms 216 and 217)	10	Geography
	Toilets		Toilets
3	Languages (rooms 210, 211, 212)	11	Physics & Astronomy
4	RS (room 208)	12	Biology (room S8)
5	Drama (room 207)	13	Design Technology (room T3)
6	Music (room M1) Access is up the stairs on your left	14	Access to toilets on the right
7	Back down the stairs and straight on to History (room 204)	15	LRC, Clubs, Admissions, Wellbeing LRC Computer Room: Computer Science
8	English (rooms 202, 203)	16	FINISH POINT Art, Photography (253) Collect prize for completed challenge card



Entry Front of School- Exit via Sports Hall & Astro Turf

Entry: Nonsuch Park Gate- Exit via Nonsuch Park gate

Fire Assembly Point- Take your nearest Exit and head for the Netball Courts