

MONDAY DECEMBER 4TH 2023 | ISSUE 2

NONSUCH NEWS

Our weekly newsletter for the school community



WHAT'S INSIDE THIS ISSUE:

- Messages from Ms Cavilla
- Updates from Mrs Williamson-Jones
- School and department news
- Upcoming dates for your diary

MESSAGES FROM MS CAVILLA



Dear parents, carers and students,

The Parent Power league table of schools was published in *The Times* and *The Sunday Times* this weekend. Nonsuch placed 33rd in the overall national rankings of all schools included in the table. Our students' results placed us in fifth position in the top 10 of best secondary and grammar schools in the South East of England. We have historically been placed in The Times' London league where we have usually occupied ninth or tenth place each year. This year we would have placed eighth in the top 10 this year if we had been ranked among London schools. We are proud of our academic standing. We are equally proud of our community and our students' agency and creativity.

The week rounded off with the arrival of what might be the tallest Christmas Tree yet to be donated by the PTA whose elves decorated it on Friday night so that students would be greeted by it this morning. Please see PTA communications regarding their Christmas raffle. All funds raised support our extra curricular and enrichment opportunities for our students.

Next week, students will have an assembly about a new app that they will soon be able to access, Class Charts. We use Class Charts to award credits for positive behaviours, linked to our school values of positivity, respect, integrity, courage and endeavour; and to award debits for behaviour that does not align with these values or support student learning. In January, we will share more information with you as we will also be launching the Class Charts parents app.

Best wishes,
Ms Cavilla

UPDATES FROM MRS WILLIAMSON-JONES

Attendance

We are beginning to receive a number of requests for leave of absence around the Christmas holidays. A reminder that it is unlikely that a leave of absence will be authorised for a family holiday though we do really appreciate you speak with us to letting us know in advance of the absence so it does not spark a safeguarding concern. We will also be following up any illness in the week before and week after the Christmas holidays and will request evidence of this illness as outline in our school attendance policy.

Thank you for your continued support to ensure your child attends school.

You can monitor your child's attendance data through the Schoolgateway app and ensure that it remains at 95% and above. If there is anything that we may be concerned about, your child's form tutor, Head of Year or myself will contact you.

Year group	Attendance (%)	Authorised (%)	Unauthorised (%)	Persistent absence >=10%
Year 7	98.6	1.19	0.21	2
Year 8	98.08	1.47	0.3	5
Year 9	97.35	2.28	0.37	12
Year 10	97.08	2.3	0.34	11
Year 11	95.53	3.94	0.53	19
Year 12	96.47	2.66	0.83	14
Year 13	93.82	4.73	1.38	37
All years	96.67	2.67	0.57	100



Reporting absence

Absences need to be reported via Schoolgateway. Please follow this link for downloading instructions if required: [Nonsuch High School for Girls - Reporting Absences](#).

SCHOOL NEWS

Nonsuch Night of the Arts

This week, Nonsuch's senior Arts prefects, aided by Arts and Wellbeing Ambassadors from lower down the school, ran "Nonsuch Night of the Arts." The event was an initiative led by Lauren, our Year 13 Arts Captain.

Facilitated by Ms Pinel, and aided by Ms Tuttolomondo, Mrs Tong, Miss Hicks and Ms Patterson, Lauren organised and coordinated an event that included exhibits of textiles, paintings and poetry alongside musical, spoken word and drama performances from students across the school. The event was run by her team; Raolat, Hazel, Naomi, Suhani and Chaitra. The event was ably supported by Riddi, Berni and Darin in Year 12, Irina in Year 10, and Isabella and Varsha in Year 8.

The performers and contributors shared their talents and none of them chose an easy option - from ballet pointe work to performance poetry and music solos and ensembles or the rendition of monologue and a sophisticated Stephen Sondheim musical number - the bar was set high. The event opened with high energy numbers from Nonsuch's Party Band - what a night!

We will share further excerpts from this wonderful evening with you soon. It's just one of several student-led initiatives that have taken place this year that we will celebrate in subsequent issues of this newsletter.

School Christmas Concert Thursday December 14th



Please come to join us for our annual Christmas Concert. Students from all year groups will perform, dance and sing to celebrate this time of year. Tickets are available via ParentPay.

The school is certainly looking festive now with this impressive Christmas Tree taking pride of place in Reception! Huge thanks to the PTA!



SCHOOL NEWS

Exams - Home/Additional Languages

The school is often able to act as a host centre if your child is studying a home/additional language outside school and wishes to take the GCSE or A-level qualification. This is available to students in Year 10 and above. For more information on the costs and languages available please contact the exams office exams@nonsuchschool.org
The deadline for entry for Summer 2024 will be Thursday February 1st 2024.



Early Help

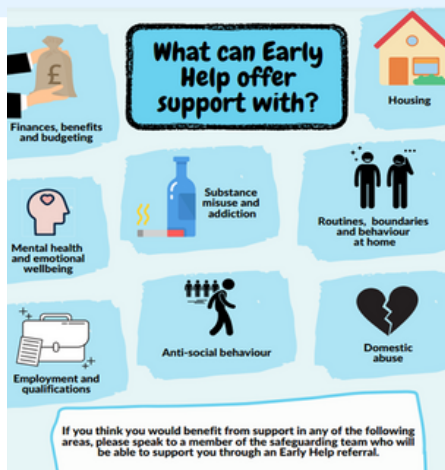
Early help refers to the support and intervention for children, young people, and families at the earliest possible stage when concerns or difficulties arise.

It aims to address issues before they become more serious or entrenched problems. Early help can cover a wide range of areas such as education, health, social care, and community services.

It involves identifying needs, providing appropriate support, and working collaboratively with families and professionals to promote positive outcomes for children and prevent further escalation of problems.

The goal of early help is to enable children and families to thrive and reach their full potential by addressing challenges in a timely and proactive manner.

If you need more information on Early Help or would like to discuss a potential referral, please contact the school and ask for Mrs. Hart. You can either call her or send her an email to safeguarding@nonsuchschool.org



NHS
Hounslow and Richmond
Community Healthcare
NHS Trust presents

Childrens & Young Peoples Flu Vaccinations in Sutton & Merton 2023

School aged children from Reception to Year 11

****FINAL FLU CLINICS****

Saturday 9th December - 10.15pm to 2.30pm
or
Thursday 14th December - 2.30pm - 6pm

Address- Sutton life centre
24 Alcorn Cl, Sutton SM3 9PX

- Walk in flu clinic for children who missed vaccine at school, last chance to get the flu vaccine.
- No appointment needed, expect waiting times
- Call 02039033371/ 02039033373 for any questions

Please see this information from the NHS regarding flu clinics in December for children and young people

Year 10s - UK Space Design Competition

The UK Space Design Competition (UKSDC) is a competition in which students from multiple schools are combined to form an engineering company and take on the task of designing a crewed space settlement within our solar system.

Open to UK students in Years 10 to 13, the UKSDC gives students a taste of the vast potential offered by future study of STEAM subjects, through this fun and engaging simulation of a career in the industry!

Year 10 students Tejaswi (Teju), Elizabeth, Parichita, Parinaya, Pranavi, Akshara, Arshia, Nuha, Parnika, Olivia organised themselves and in their free time decided to enter the London regional heat.

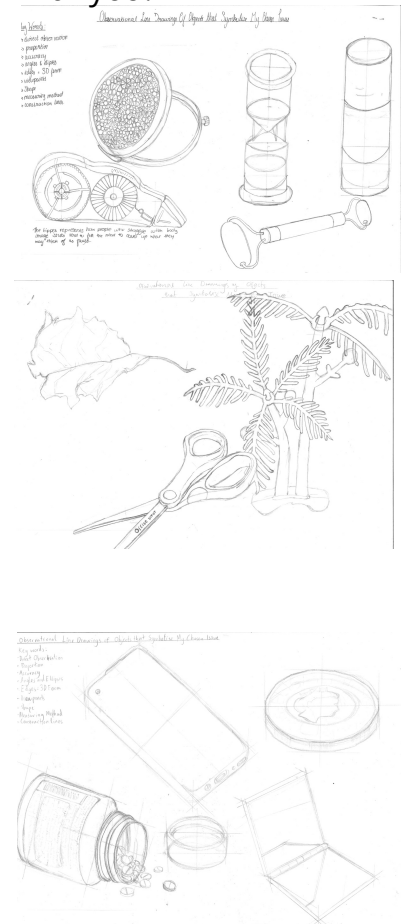
Teju writes: "The proposal was to build a base on the Moon for 200 people. We merged with two other teams who had done zero preparation, so most of the work fell onto us. Two thirds of the speakers at our presentation to the judges were from Nonsuch and presented excellently.

Although we did not win, we came a close second by 1-2 points. The CEO of the UKSDC came to congratulate us and said how much she wanted to see us at Nationals - if not this year, then definitely next year."

We are very proud to see our students proactively and independently engage in supra-curricular activities. Keep up the good work!

Art

We are very pleased to share some of the excellent observational drawings by Y9 students with you!



PE

Upcoming fixtures w/c 4th December 2023

Date	Time	Sport	Team	Location
29/11/23	15:30	Netball	Y11 A&B	Nonsuch
06/12/23	16:15	Hockey	U16A	Nonsuch
07/12/23	11:00	Badminton Competition	KS3	Tiffin Girls' School
07/12/23	13:00	Indoor Cricket	U15	Ewell Castle

DEPARTMENT NEWS

PE - Y8 cricket

Last week, some of our Year 8s participated in the U13 Indoor Cricket Competition against St. Philomena's and Oaks Park High School. We saw lots of great teamwork and communication during the games. Nonsuch was placed 1st overall and are now moving onto the next round of this competition. A huge congratulations to the team, they should be very proud, and we wish them the very best of luck as they go into the next round!!



PE - U13s hockey



Our U13s Hockey Squads had their first fixtures of the season against Sutton High on Monday November 20th. It was lovely to see the students putting all of their strategies and set plays into practice. Both teams demonstrated great sportsmanship, in the form of encouragement from the side-lines and giving 'three cheers' at the end. There were lots of opportunities at goal, with six successful shots scored from a variety of players. We are looking forward to the next set of fixtures to keep building on this strong start.

PE - Y11 A&B Netball v Wallington

Both teams played their very best even with the B team down a player. They were both tough games in the freezing cold, but the teams persevered through, and we saw some great teamwork across both courts. A well done to the Y11 A&B Squads!



UPCOMING DATES FOR YOUR DIARY

Week 2	Year 11 Mock Exams
Monday 4th December	
Tuesday 5th December	
Wednesday 6th December	Y9 Parents Information Evening – Options 18.00
Thursday 7th December	KS3 Badminton Competition – Tiffins -11.00 U15 Indoor Cricket Tournament – Ewell Castle – 14.00
Friday 8th December	
Week 1	Year 11 Mock Exams
Monday 11th December	
Tuesday 12th December	
Wednesday 13th December	Yr13 National Archives Trip
Thursday 14th December	Late start for students - 9.55am registration Christmas Concert – 18.00
Friday 15th December	