

MONDAY NOVEMBER 27TH 2023 | ISSUE 1

NONSUCH NEWS

Our weekly newsletter for the school community



WHAT'S INSIDE THIS ISSUE:

- Messages from Ms Cavilla
- School and department news
- Upcoming dates for your diary

MESSAGES FROM MS CAVILLA



Dear parents, carers and students,
Welcome to our new look newsletter. Its design is coherent with the school's [website](#) and aims to lay out content clearly and accessibly.

We look forward to our Year 8 Parent Teacher Consultations online this week as well as Wednesday's *Nonsuch Night of the Arts* event.

Please read all about Year 9s' superb fundraising Fair for Friends of Kipkelion, our whole school charity.

We are also delighted that around 350 students from across the Trust joined the online Higher Education Fair on two consecutive nights last week. This opportunity aids decision-making and raises awareness of the many possibilities and options out there. We are indebted to Mrs Suvari for arranging it.

You will find pastoral news and updates published separately.

May I remind parents, carers and students that as the nights are now drawing in, we do not want students leaving via the park gate after 4.30pm – please leave via the canteen gate exit.

Best wishes,
Ms Cavilla

UPDATES FROM MRS WILLIAMSON-JONES

Attendance

Current whole school attendance data

Our whole school attendance figure has improved this week and the number of students who are persistently absent has fallen by 46.

Thank you for your continued support to ensure your child attends school.

With attendance, everyday counts. School and future success is linked closely with attendance. Students who have an attendance rate of 90% or below will have missed 95 hours of learning at the end of the school year - that's 95 hours of support and help in lessons that cannot be replaced. It's that support and help that enables them to achieve those desired high grades. It's a good idea to check and monitor your child's attendance and encourage them to be in school learning at every opportunity. You can monitor your child's attendance data through the School Gateway app and ensure that it remains at 95% and above. If there is anything that we may be concerned about, your child's form tutor, Head of Year or myself will contact you.

Year group	Attendance (%)	Authorised (%)	Unauthorised (%)	Persistent absence >=10%
Year 7	98.57	1.21	0.22	3
Year 8	98.17	1.32	0.33	5
Year 9	97.49	2.11	0.4	10
Year 10	97.27	2.1	0.3	7
Year 11	96	3.45	0.54	13
Year 12	96.42	2.43	0.87	14
Year 13	93.79	4.8	1.38	32
All years	96.78	2.51	0.59	84



Reporting absence

Please follow this link if you have to report your child's absence: [Nonsuch High School for Girls - Reporting Absences.](#)

SCHOOL NEWS

Year 9 - fundraising for Friends of Kipkelion

Year 9 organised a very successful Fair on Thursday November 23rd to raise funds for one of our school charities, Friends of Kipkelion. Students from all years enjoyed the many stalls Year 9 had planned, including gingerbread man decorating, multi-cultural snacks, a photobooth and 'guess the baby photo of a teacher'!

Friends of Kipkelion is a charity that helps to provide safe, year-round drinking water for schools and rural communities; to ensure that schools are safe, hygienic places where children (especially girls) can learn; and to give everybody access to basic healthcare and health education in Kipkelion, Kenya. Find out more here [Friends of Kipkelion - YouTube](#).

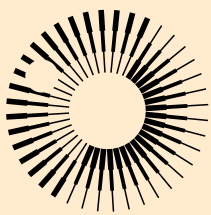
This year we are raising money to support the construction of a water tank.



DEPARTMENT NEWS

Astronomy - national recognition for Nonsuch student

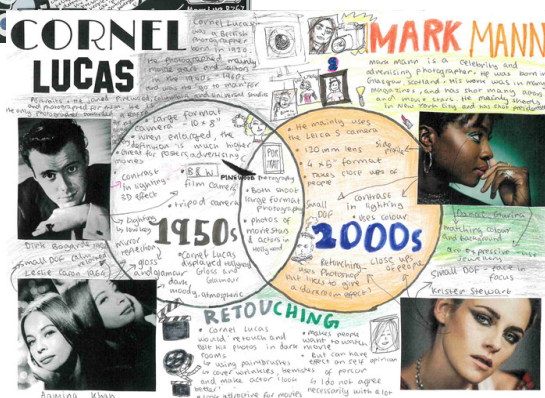
Congratulations to Guneet, one of our 2023 GCSE cohort, for receiving recognition from the Royal Astronomical Society for her outstanding achievement in GCSE Astronomy this summer. Guneet has excelled exploring Earth, the Solar System, the Milky Way galaxy and beyond. Well done, Guneet!



Royal
Astronomical
Society

Photography - Year 10

Pictured here are some fabulous examples of Year 10 students Sani and Aamina's work we wanted to share and celebrate with you.



Geography - Year 10 field trips to the Queen Elizabeth Olympic Park

Last week our Y10 geographers visited the Queen Elizabeth Olympic Park in Central London to explore urban regeneration and sustainability. Whilst there, students collected data, photographs and fieldwork sketches as primary data. This data will be used in students' Geography GCSE Paper 3 examination.

The students represented us very well and were a credit to Nonsuch when conducting their questionnaires.



DEPARTMENT NEWS

PE

Fixture results w/c 13th/20th November 2023

Date	Sport	Opponents	Age	Venue	Result
13/11/23	Hockey	Sutton	U12 A&B	Nonsuch	5-0 2-0
15/11/23	Hockey	Sutton	U14 A	Nonsuch	5-0
20/11/23	Hockey	Sutton	U13A&B	Nonsuch	4-2 4-4
21/11/23	Netball	Rosebery	U13A & U14A	Nonsuch	15-8 WIN! 12-3
22/11/23	Gymnastics Floor & Vault Competition	Surrey Schools	U19 & U15	St. Catherine's	

Upcoming fixtures w/c 27th November 2023

Date	Time	Sport	Team	Location
27/11/23	13:30	Indoor Cricket Tournament	U13	Nonsuch
29/11/23	15:30	Netball	Y11A&B & SNRA&B	Nonsuch

PE - photos from our recent netball and gym fixtures!



UPCOMING DATES FOR YOUR DIARY

Week 1	
Monday 27th November	U13 Indoor Cricket Tournament – 13.30
Tuesday 28th November	House Talent Show – auditions – 12.20 Year 8 Parent-Teacher Consultation - 16.00 – 19.30
Wednesday 29th November	House Talent Show – auditions – 12.20 Night of the Arts – Hall – 18.00
Thursday 30th November	School finishes at 12.25 Year 8 Parent-Teacher Consultation afternoon 13.10 –15.30
Friday 1st December	Year 13 RS Conference - London Year 9 trip to Harry Potter Warner Studios
Saturday 2nd December	Year12: Bar Mock Trial, Snaresbrook Crown Court
Week 2	
	Year 11 mock exams begin
Tuesday 5th December	House Talent Show – auditions – 12.20
Wednesday 6th December	House Talent Show – auditions – 12.20 Y9 Parents Information Evening – Options 18.00
Thursday 7th December	U15 Indoor Cricket Tournament – Ewell Castle – 14.00